



Design
Your Space...

New Collection

INDEX

ONE PIECE	01
TWO PIECE.....	05
WATER CLOSET.....	07
BASIN WITH PEDESTAL.....	08
WASH BASIN.....	12
PANS	14
URINAL	16
VITROSA STARGOLD SET	18
VITROSA POLO SET.....	21
VITROSA MINI REPOSE SET.....	24
VITROSA BIG STRELING SET	26
DESIGNER ONE PIECE BASIN	28
VITROSA 12"X18" WASH BASIN.....	31
DOUBLE COLOUR PANS.....	31
VITROSA ONE PIECE.....	32
RUSTIC PANS.....	33
RUSTIC WATER CLOSET.....	33
RUSTIC BASIN WITH PADESTAL.....	34
RUSTIC WASH BASIN	34
ACCESSORIES	35
COLOUR RANGE.....	36



Design
Your Space...



easy clean
surface



eco friendly



hygienic
glaze



water saving
technology



Opal (Round)
Model-501
P&S Trap 225mm(9")
Wash Down



Olivia (Square)
Model-503
P&S Trap 225mm(9")
Wash Down



Olix (Square)
Model-502
P&S Trap 225mm(9")
Wash Down



Diamond
Model-504
P&S Trap 225mm(9")
Wash Down



**Clone
Model-505**

S Trap 225mm(9")
Syphonic



**SEPAL
Model-506**
P&S Trap 225mm(9")
Wash Down



Aqua Pan Set
P&S Trap



Square Aqua Pan Set
P&S Trap



italian Set
S Trap



European
P&S Trap



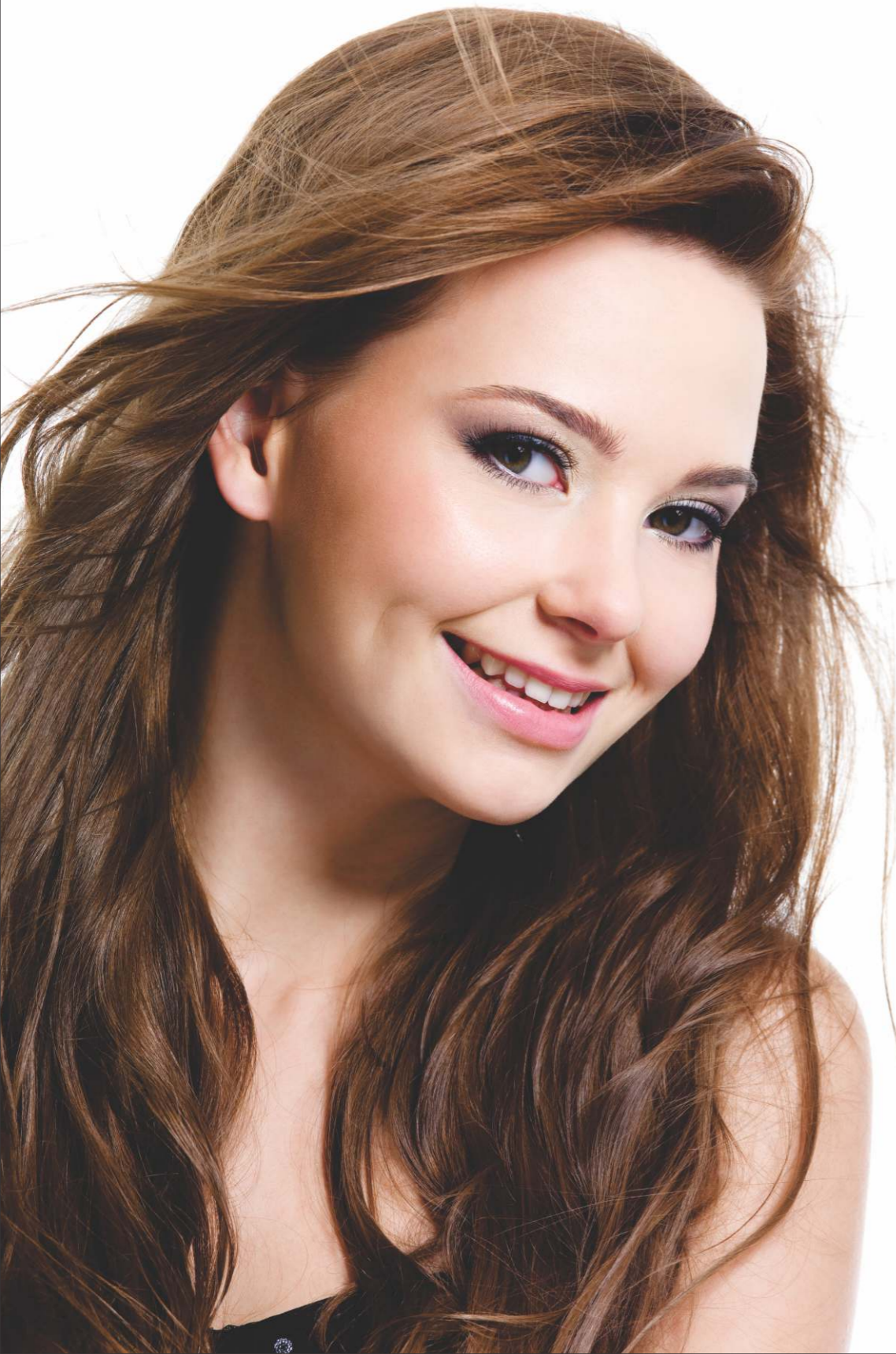
Anglo
P&S Trap



Concealed(E.W.C)
S Trap



WC floor mounted
S Trap



BASIN WITH PADESTAL

BASIN WITH PADESTAL



Big Sterling Set
Size : 25"x19"



POLO SET
Size : 22"x17"



SOPHIA SET
Size : 22"x17"



CAPRI SET
Size : 25"X19"



REPOSE SET
Size : 22"x16"



STAR GOLD SET
Size : 23"X17"



CRYSTAL SET
Size : 22"x17"



PRIME SET
Size : 20"x16"



MINI REPOSE SET
Size : 18"x14"

WASH BASIN

WASH BASIN

“Every *Decorative* Piece
////////// In Place Feeling Of Choice”



CAPRI BASIN

Size : 25"x19"



REPOSE

Size : 22"x16"



PRIME

Size : 20"x16"



STANLEY

Size : 18"x14"



SPIEGEL

Size : 18"x12"



SPENO

Size : 14"x11"



CORNER

Size : 16"x16"

**Simplicity And
Extreme
Cleanliness**



PANS

PANS



20" Orissa Pan



23" Orissa Pan



20" City Pan



21" Stand Orissa Pan



Eastern Pan



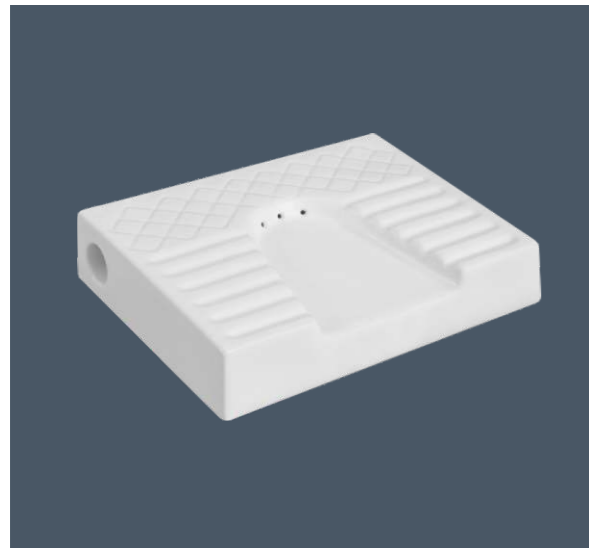
20" Medium Deep Pan



HALF STALL URINAL (GENTS)



FLAT BACK URINAL (GENTS)



SQUATTING URINAL (LADIES)



NENO URINAL

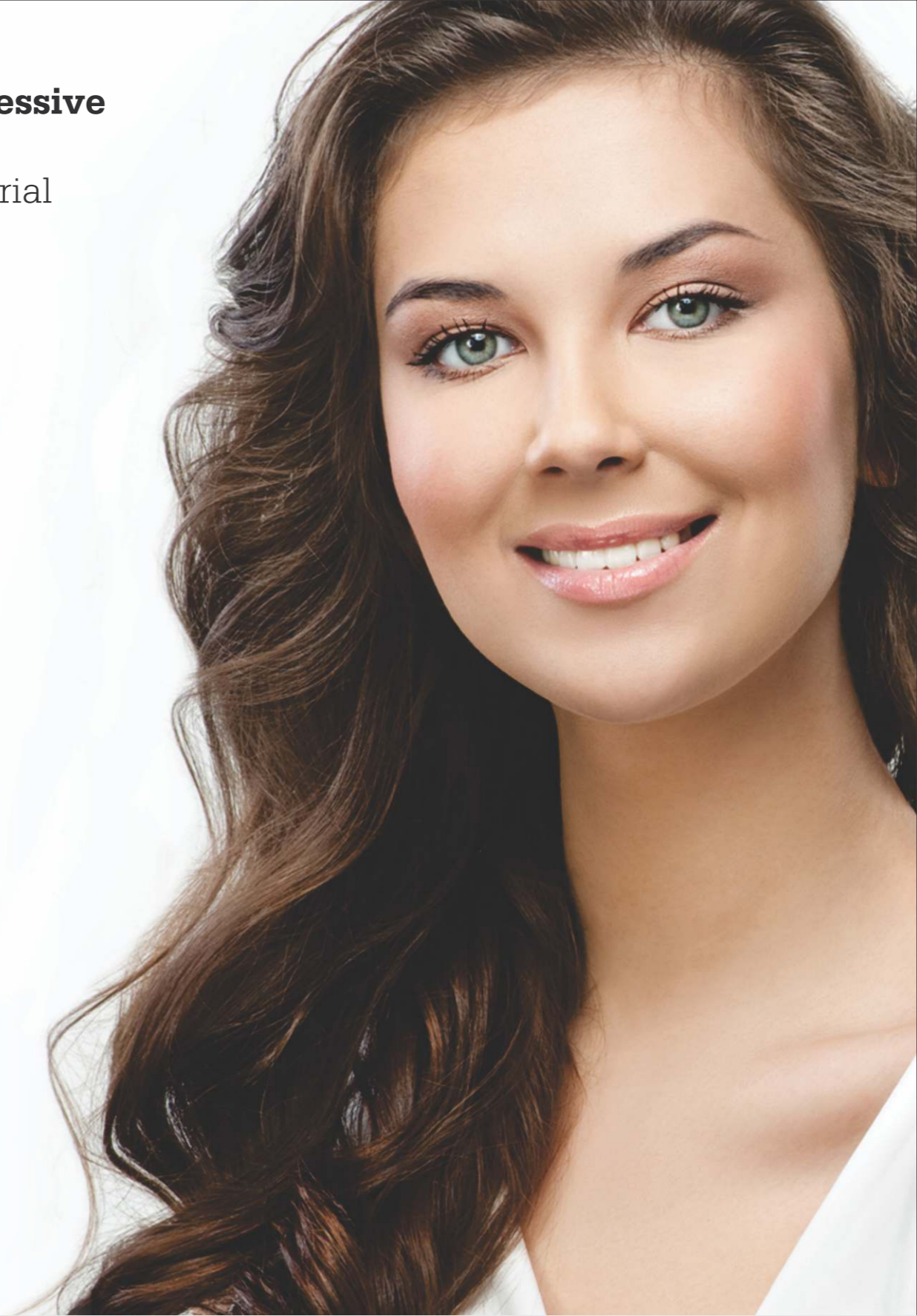


LAB SINK

Size : 24"x18"x10"
Size : 18"x12"x8"

The Expressive
Strength
Of A Material

VITROSA SET





Al. Blue - 101



Magenta - 102



Coffee Brown - 105



Aqua Green - 106



Mint Green - 103



Red Brown - 104



Pink - 107



Black - 108

◀  **VITROSA STARGOLD SET**

VITROSA POLO SET  ▶



Burgundy - 109



Red - 110



Al. Blue - 201



Majenta -202



Orenge -111



Wooden -112



Blue - 113



Mint Green - 203



Red Brown - 204



Coffee Brown - 205



Aqua Green - 206



Red - 210



Orange - 211



Pink - 207



Black - 208



Wooden - 212



Blue - 213



Al. Blue - 301



Majenta - 302



Aqua Green - 306



Red - 310



Mint Green - 303



Red Brown - 304



Wooden - 312



Blue - 313



Al. Blue - 401



Magenta - 402



Aqua Green - 406



Red - 410



Red Brown - 404



Coffee Brown- 405



Wooden - 412



Black - 408



Pink - 407



Damru-01



Damru-02



Damru-03



Damru-04



Damru-05



Damru-06



Damru-07



Damru-08

DESIGNER ONE PIECE BASIN



Damru-09



Damru-10



Damru-11



Damru-12



Damru-13

VITROSA 12"X18" WASH BASIN



AL.BLUE-601



MAGENTA-602

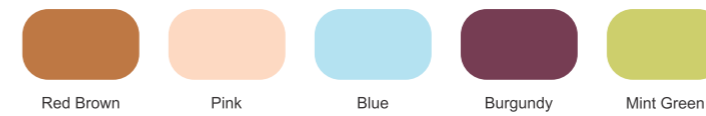


COFFEE BROWN-605



AQUA GREEN-606

Colour Available :



DOUBLE COLOUR PANS



20" Orissa Pan / Alpine Blue Double Colour



20" Orissa Pan / Magenta Double Colour



20" Orissa Pan / Red Double Colour



20" Orissa Pan / Mint Green Double Colour



20" Orissa Pan / Aqua Green Double Colour

 **VITROSA ONE PIECE**



Aqua Green



Alpine Blue



Red



Magenta



Mint Green



Wooden

RUSTIC PANS 



20" Orissa Pan / Coffee Brown Rustic



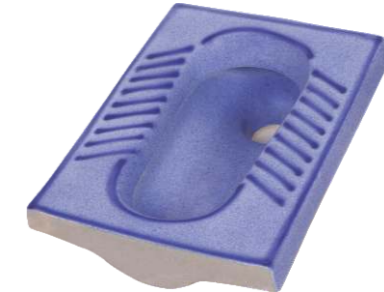
20" Orissa Pan / Red Brown Rustic



20" Orissa Pan / Magenta Rustic



20" Orissa Pan / Black Rustic



20" Orissa Pan / Alpine Blue Rustic

RUSTIC WATER CLOSET 



E.W.C "S" / Magenta Rustic



E.W.C "S" / Alpine Blue Rustic



E.W.C "S" / Black Rustic



E.W.C "S" / Coffee Brown Rustic



E.W.C "S" / Red Brown Rustic

 **RUSTIC BASIN WITH PADESTAL**



Red Brown / Rustic



Coffee Brown / Rustic



Black / Rustic



Alpine Blue / Rustic



Magenta / Rustic

 **RUSTIC WASH BASIN**



Red Brown (18"x12")
Rustic



Magenta (18"x12")
Rustic



Coffee Brown (18"x12")
Rustic



Alpine Blue (18"x12")
Rustic



Black (18"x12")
Rustic

ACCESSORIES 



E.W.C Seat Cover



CERAMIC L.L.C. TANK



Flush Tank



Flush Fitting



P-Trap



S-Trap



Big P-Trap

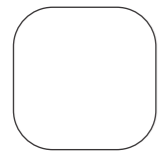


Partition Plat



Soap Dish

Regular



White



Blue



Green



Pink



Ivory



Grey



Red Brown



Coffee Brown

Special



Aqua Green



Magenta



Sorento Blue



Oasis Green



Mint Green

Deluxe



Black



Pacific Blue



Burgundy

Exclusive

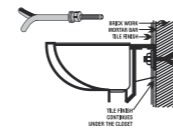


Red



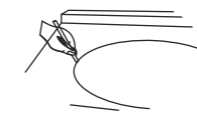
Orange

INSTALLATION METHOD



WALL HUNG PRODUCTS

As per shown in the picture, the rag bolt must be grouted into the cement/concrete wall. The bolts must be fixed to the cement/concrete wall. Allow setting & checking than install it using nut and washer.



COUNTER WASH BASIN

At the beginning

- A skilled or experienced person should install counter lavatories.
- Avoid using adhesive with this product.
- Check the waste area and supply tubing if required.
- Do not open the lavatory from its protective carton until you are ready for installation. Please follow all local building and plumbing codes.

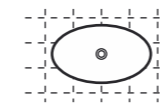
MATERIAL & TOOLS

Measure tape, Keyhole or saber saw, Hammer, Glasses, Rags or Paper toweling, Drill (1/2 dia, drill bit or larger), Pencil, Sealant, Sharp knife or scissors.

INSTALLATION OF LAVATORY

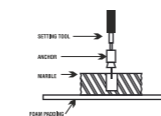
Please Note: Please install it in a way that future removal from underneath the counter top is possible without damaging the counter top.

- Please check the desired location for clearance between the back splash, faucet, fixture and cabinet.
- Please cut the template.
- Please carefully trace the template on the counter top directed.
- Please mark the faucet hole centerline in the counter top.
- Please drill a 1/2" pilot on the inside of the cut line.



FOR WOOD COUNTER TOPS:

Mark and pre-drill the wood screw holes at the locations shown on the template. Waterproof any exposed areas of wood.



FOR MARBLE COUNTER TOPS:

Position the counter top upside down on the foam padding to protect the surface. Mark and drill 3/8" holes 5/8" deep at the locations shown in the template. Use a setting tool and hammer to secure the anchors.

FOR ALL INSTALLATIONS:



If the counter top has not been installed, install it at this time.

Drill the faucet holes according to the faucet installation instructions.

Install the faucet to the counter top according to the manufacturer's instructions. Install the drain to the lavatory according to the manufacturer's instructions.